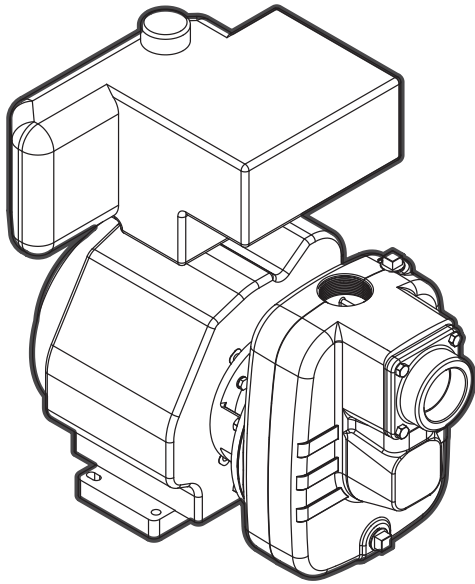


Gas Engine FNSGF

BOOK: GES-010
DATE: Mar. 1, 2012



Features:

- **Volute:** Cast iron rugged construction with tapped openings for priming, venting and draining.
- **Impeller:** Enclosed cast iron for higher pressure applications.
- **Mechanical Seal:** Standard carbon/ceramic faces, Viton® elastomers, 300 series stainless components.
- **Engine:** Industry recognized Kohler, Briggs & Stratton, or Honda equipped with adjustable throttle controls.
- **Mounting:** Horizontal position.

Applications:

- Irrigation
- Construction
- Mining
- Commercial
- Municipal
- Light Industrial

Specifications:

Capacities: to 165 gpm

Heads: to 185 feet

Working Pressure: 120 psi max

Temperature: 200 °F max

Rotation: clockwise viewed from engine side

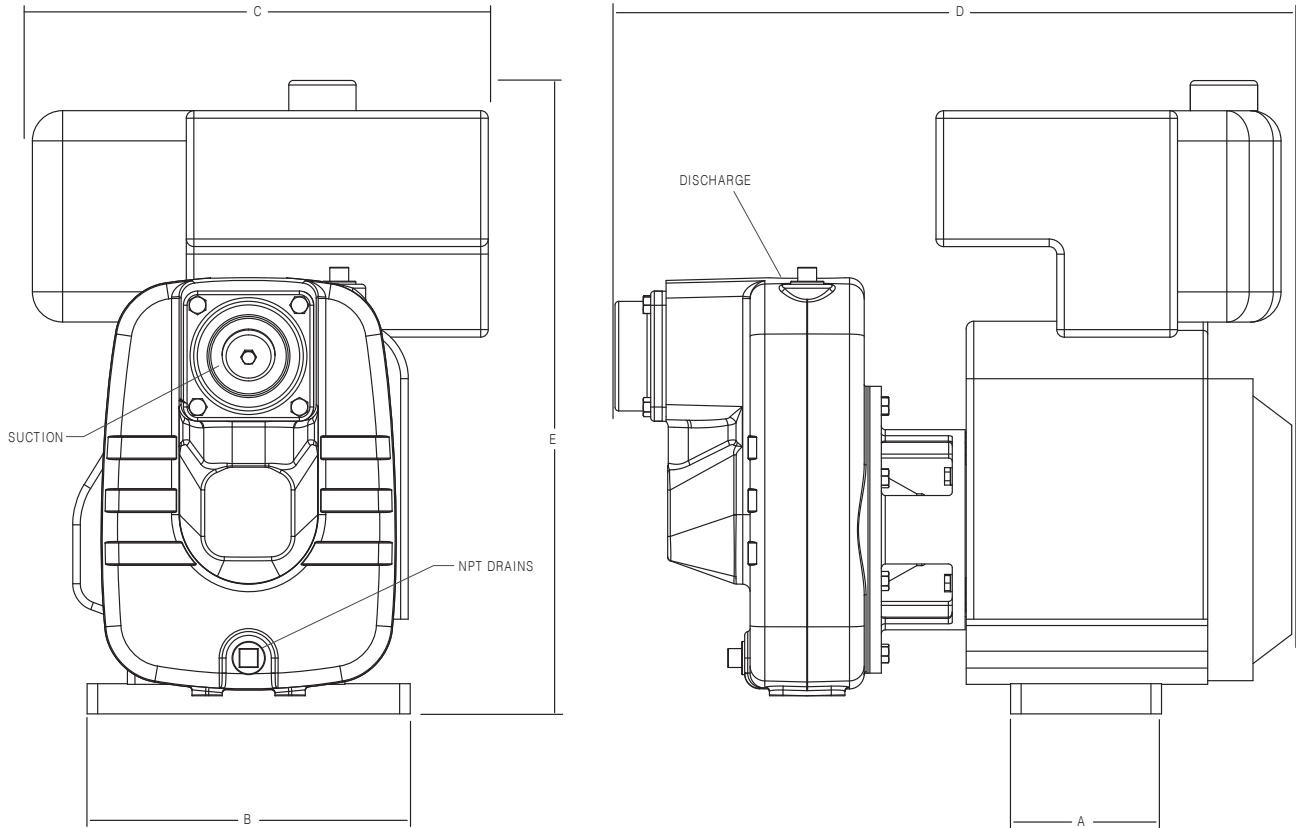
Pipe Connections: NPT

Model (HP)	Discharge	Suction
5.5	2"	2"
8, 9	2"	2-1/2"

Viton® is a registered trademark of E. I. du Pont de Nemours and Company.

Gas Engine FNSGF

Dimensional Drawings:



Dimensions:

Model	Discharge	Suction	A	B	C	D	E
FNSGF-5	2	2	9.75	13.5	16.20	20.25	14.38
FNSGF-8	2	2-1/2	13	17	17.31	23.66	17.75

Note: Dimensions are for estimating purposes only. All dimensions in inches.

Gas Engine FNSGF

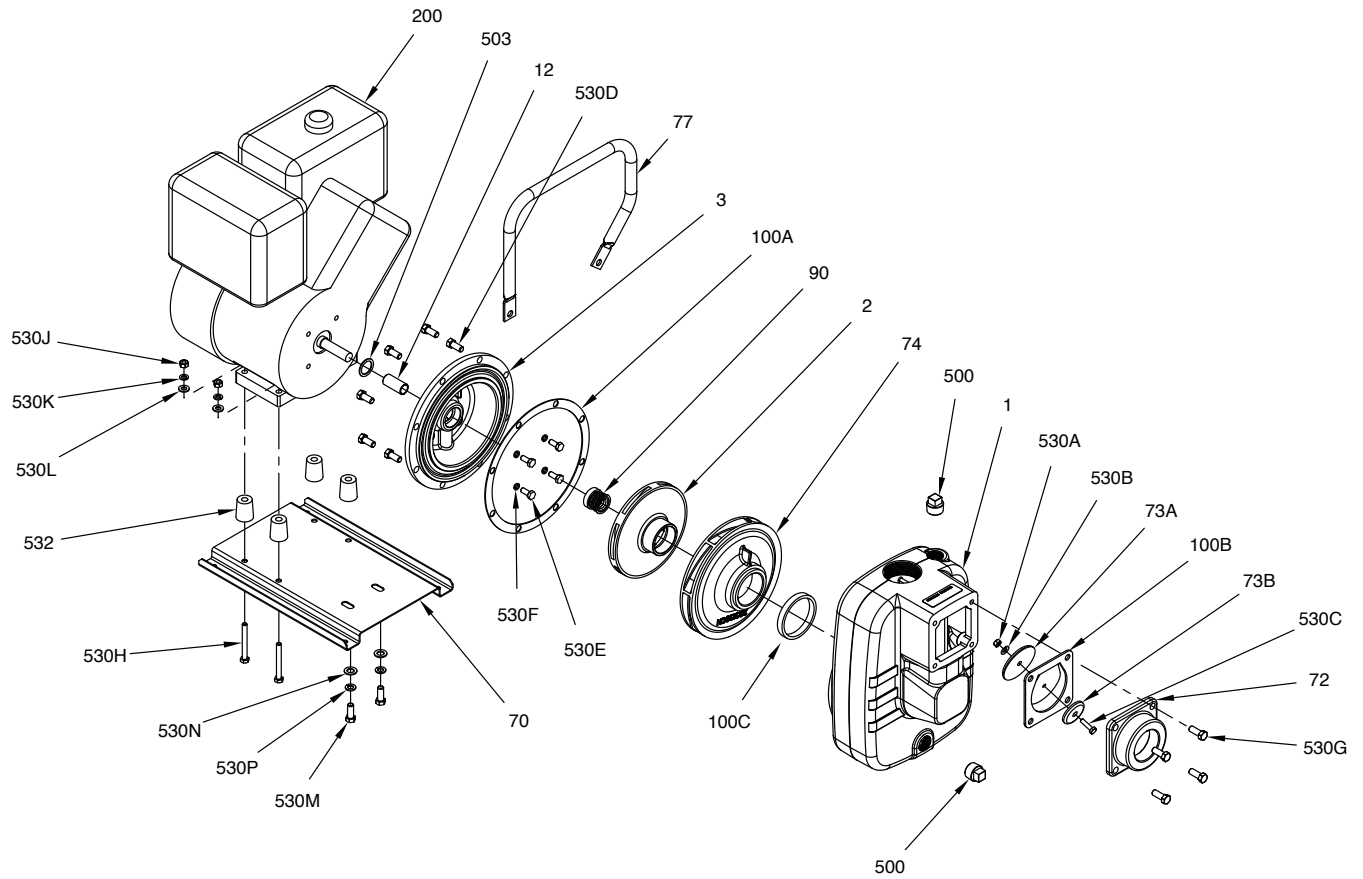
Ordering Information:

Gas Engine 5.5 - 8 HP Class						
Pump Size (Dis x Suc)	HP	Model Description	Engine Description	Order Number	Low Oil Shut-Off	Weight
2 x 2	5.5	FNSGF-5	Briggs & Stratton INTEK, with 3 qt. fuel tank	90272005	NO	94
	5.5	FNSGF-5H	Honda, with 4 qt. fuel tank	90272105	YES	94
	6.7	FNSDF-5	Kohler diesel, with 4.5 qt. fuel tank	90274005	NO	134
2 x 2-1/2	8	FNSGF-8	Briggs & Stratton INTEK, with 3 qt. fuel tank	90272008	NO	118
	9	FNSGF-8H	Honda, with 4 qt. fuel tank	90272108	YES	118
	9.8	FNSDF-8-ES	Kohler diesel, with 5.3 qt. fuel tank	90274108	YES	145
	9.8	FNSDF-8	Kohler diesel, with 5.3 qt. fuel tank	90274008	NO	145

Note: All weight in pounds. Equipped with electric start. Battery and cables not included.

Gas Engine FNSGF

Exploded Parts Drawing:



Gas Engine FNSGF

Materials and Parts:

Fig. No.	Part Description	Part No.				Materials of Construction
		FNSGF-5	FNSGF-5H	FNSGF-8	FNSGF-8H	
1	Pump Case	305460013				Cast Iron, ASTM-A48 CL30
2	Impeller	305459004		305460014		Cast Iron, ASTM-A48 CL30
3	Motor Adapter	305460015		305460016		Cast Iron, ASTM-A48 CL30
12	Mech. Seal Shaft Sleeve	305458010		305459011		416 Stainless Steel
70	Base, Engine Frame	305460017		305459016		CRS
72	Check Valve	305455010		305460018		Cast Iron, ASTM-A48 CL30
73A	Top Weight - Check Valve	305455011				Cast Iron, ASTM-A48 CL30
73B	Bottom Weight - Check Valve	305455012				Cast Iron, ASTM-A48 CL30
74	Diffuser	305460019				Cast Iron, ASTM-A48 CL30
77	Handle	305460020		305459018	305459019	CRS
90	Mechanical Shaft Seal	305463116		305463043		CARB/CER x VITON®-SS
100A	Case Gasket	305463130				Neoprene
100B	Flapper Valve	305454043				Neoprene
100C	Square-Ring - Volute	305463131				Nitrile
200	Engine	See Below				Misc.
500	Pipe Plug 3/4" (2 Req.)	305463050				CAD Plated Steel
503	Water Slinger	305458022		305456009		Neoprene
530A	Nut, Flapper	305463082				300 Series Stainless Steel
530B	Washer, Flapper	305463084				300 Series Stainless Steel
530C	Flapper Bolt	305463080				316 Stainless Steel
530D	Hex Bolts - Volute (4-Pack)	305463064				Zinc Plated Steel
530E	Hex Bolt - Motor Adapter (4-Pack)	305463120		305463214		Zinc Plated Steel
530F	Collar Seal - Motor Adapter (4-Pack)	305463107		n/a		Nylon
Not Shown	Lockwasher - Motor Adapter (4-Pack)	n/a		305463010		Zinc Plated Steel
530G	Hex Bolt - Check Valve (12-Pack)	305463010				Zinc Plated Steel
530H	Hex Bolt - Base (4-Pack)	n/a		305463090		Zinc Plated Steel
530J	Hex Nut - Base (4-Pack)	305463062				Zinc Plated Steel
530K	Lockwasher - Base (4-Pack)	305463092				Zinc Plated Steel
530L	Washer - Base (4-Pack)	305463109				Zinc Plated Steel
530M	Bolt - Base Volute (4-Pack)	305463064				Zinc Plated Steel
530N	Washer - Base Volute (4-Pack)	305463064				Zinc Plated Steel
530P	Lockwasher - Base Volute (6-Pack)	305463032				Zinc Plated Steel
532	Spacer (4-Pack)	305463213		305463215		Cast Iron

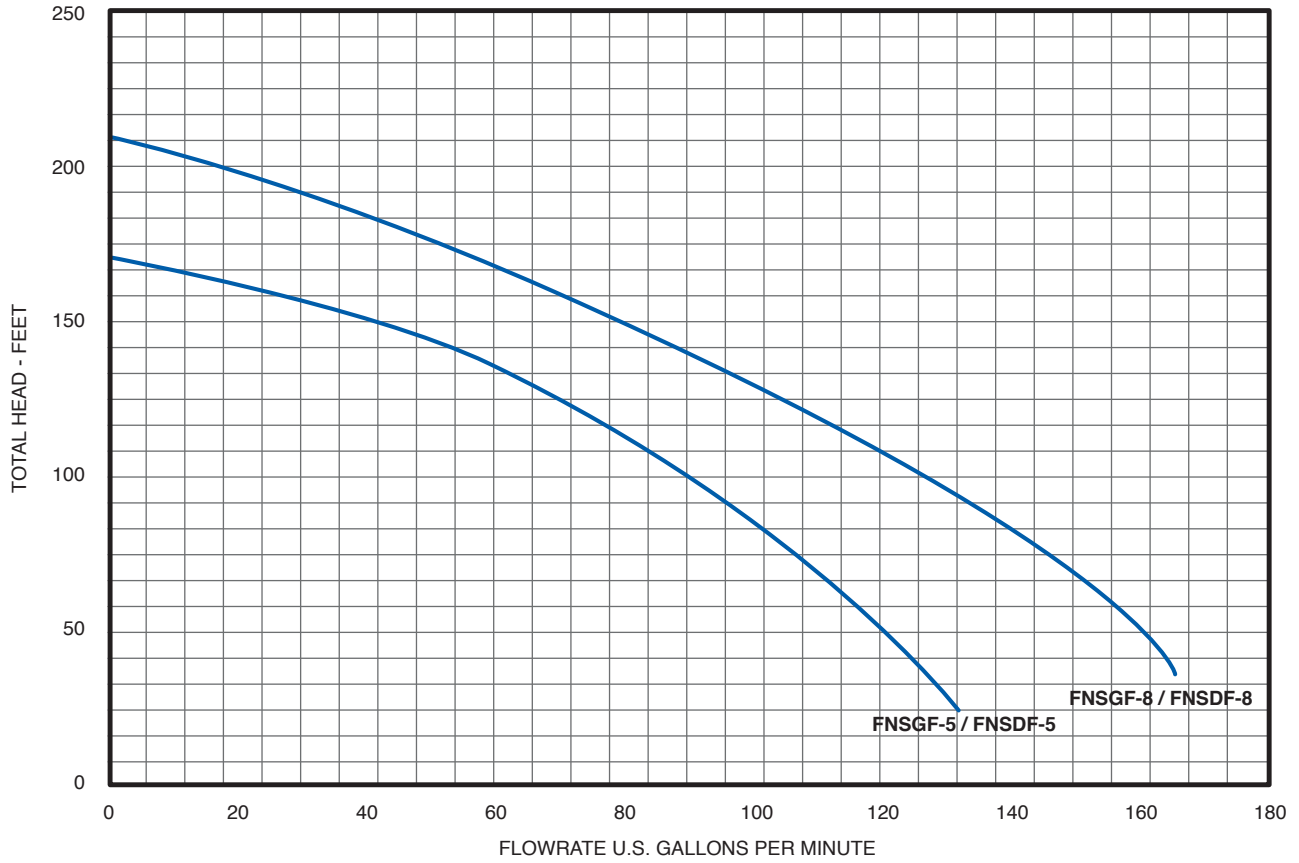
Note: Consult factory regarding parts support on Diesel Optional Units.

Viton® is a registered trademark of E. I. du Pont de Nemours and Company.

Model	Motor Description	Part No.
FNSGF-5	Eng B/S 120232-0136-B8 206CC	201915
FNSGF-5H	Eng Honda GX160UT1TX2 5.5 hp OHV	202001
FNSGF-8	Eng B/S 201332-0158-B1 305CC	201918
FNSGF-8H	Eng Honda GX270UTPA2 9 hp OHV	202002
FNSDF-5	Eng Kohler KD350-5001 6.7 hp	202061
NSDF-8L-ES	Eng Kohler KD420-4001-9001 9.8 hp	202065
FNSDF-8	Eng Kohler KD420-3100 9.8 hp	202064

Gas Engine FNSGF

Performance Curve:



Model	Performance Chart							
	Discharge Pressure in PSI at 5 Ft. Lift							
	10	20	30	40	50	60	70	80
	Capacities in U.S. GPM							
FNSGF-5	132	115	106	85	70	52	-	-
FNSGF-8	165	162	145	125	110	85	50	30



Franklin Electric

400 East Spring Street, Bluffton, Indiana 46714
Tel: 260.824.2900 Fax: 260.824.2909
www.franklin-electric.com